

the Homer on holly street

from our famous poets series



We are striving to develop the future using energy efficient design,
utilizing technology along with common sense, so our children's
children will have a place to live.

Greenzilla Communities
201 Milwaukee Street, Suite 200
Denver, Colorado 80206

Contact: Jason Lewiston
303 802 6700
JasonLewiston@GMail.com

jeff dawkins architect . llc
2565 west maple road . suite 201
birmingham. michigan . 48084

Contact: Jeff Dawkins
248 321 0640
jeffthearchitect@gmail.com

the Homer on holly street

GREENZILLA
COMMUNITIES

jeff dawkins architect . llc

The Homer is a new (in 2020) six unit townhouse project in the Hilltop neighborhood of Denver.

The Homer is an all masonry traditional townhouse design with state of the art energy features, and the highest quality indoor air and water systems.

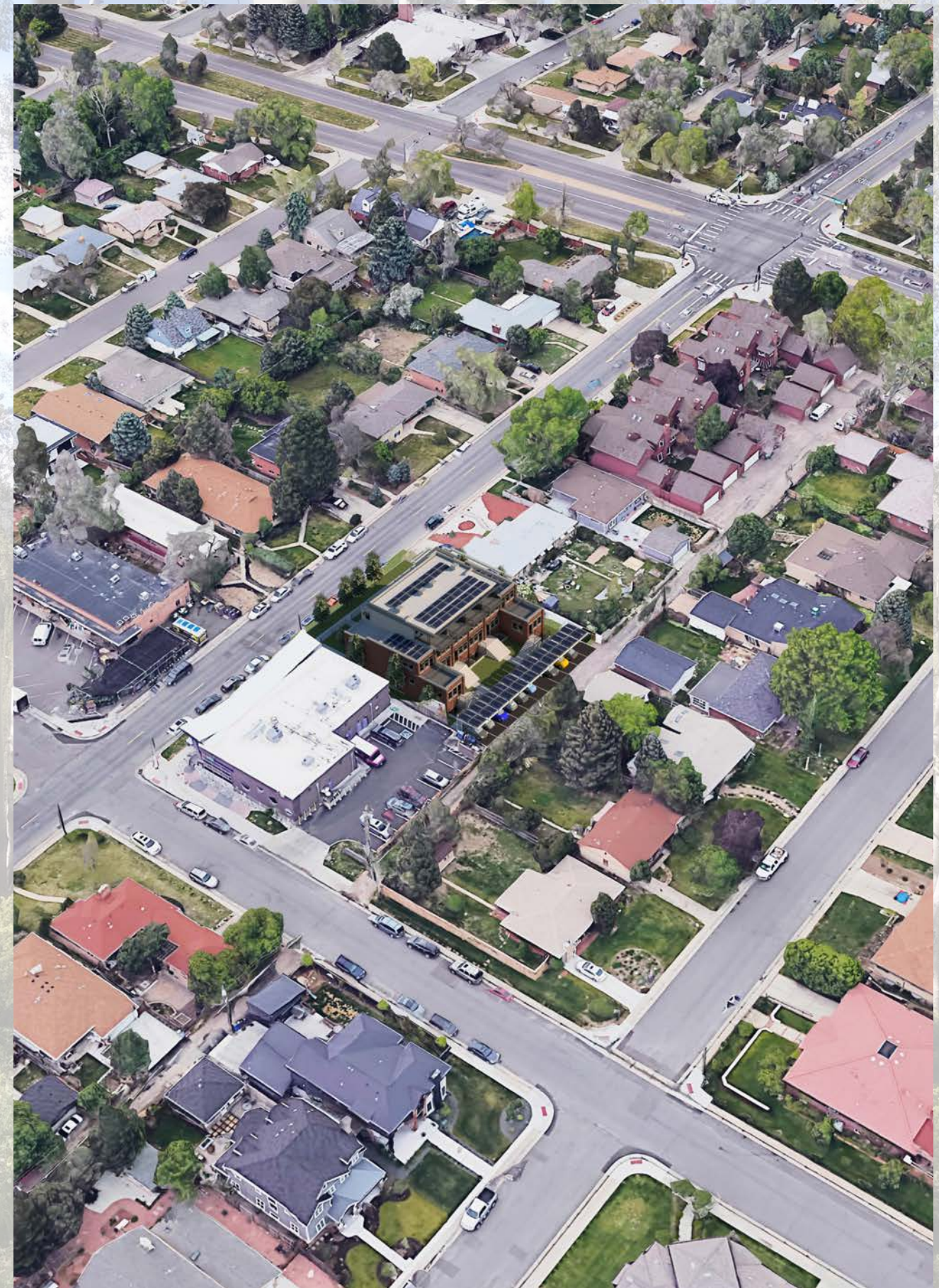
The end units are about 2,500 square feet, with 4 bedrooms and 3.5 baths. The interior units are about 2,600 square feet, with four bedrooms and 3.5 baths.



possible interior



view from above holly street



the Homer location

The building is solar powered and units will be 'net zero' (depending on individual energy use). The heating and cooling, water heater, and appliances are all high efficiency and electric. There will also be plugs for electric cars in the parking areas.

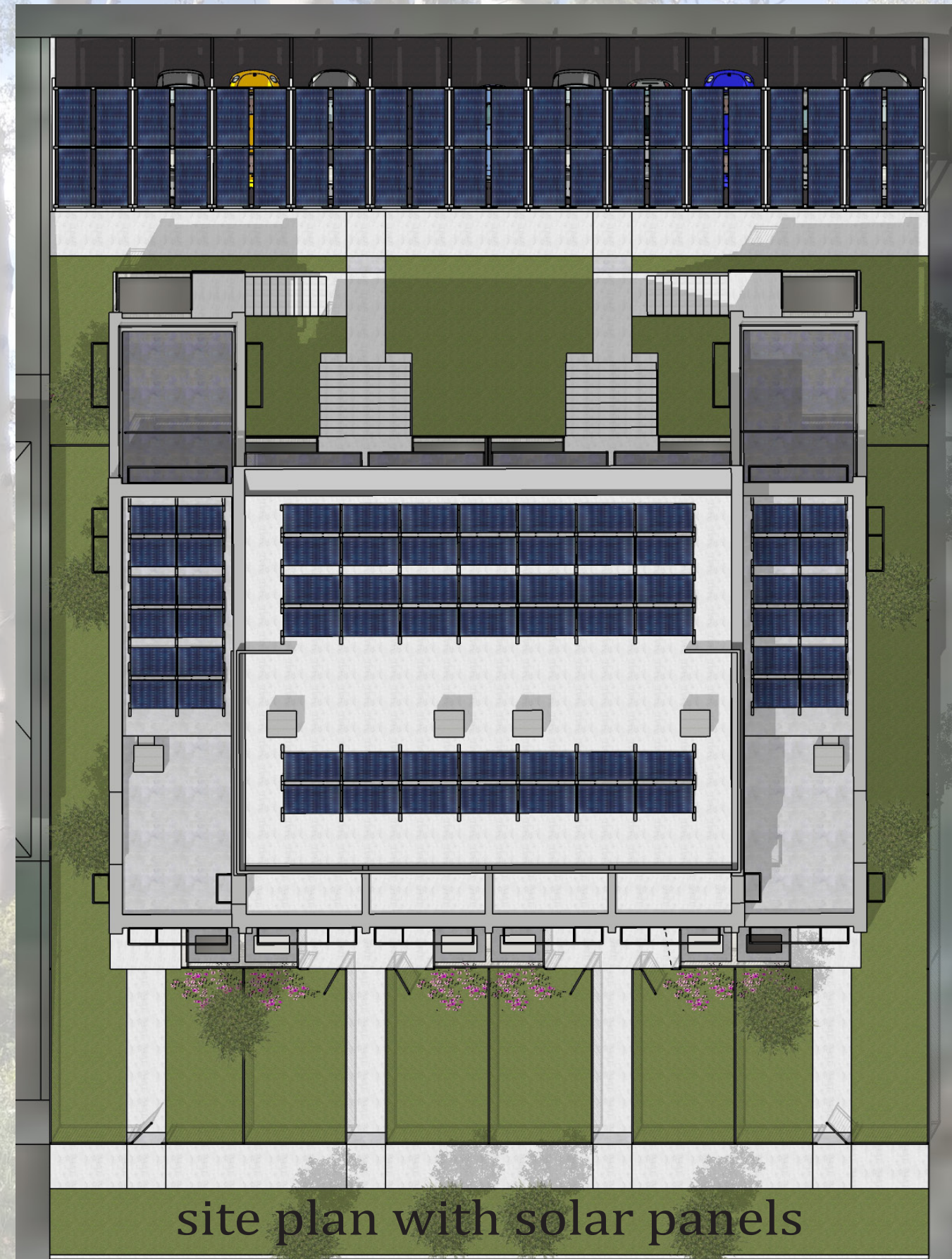
We have not finalized landscape plans.



view from alley



view from above the alley



site plan with solar panels

the Homer site plan

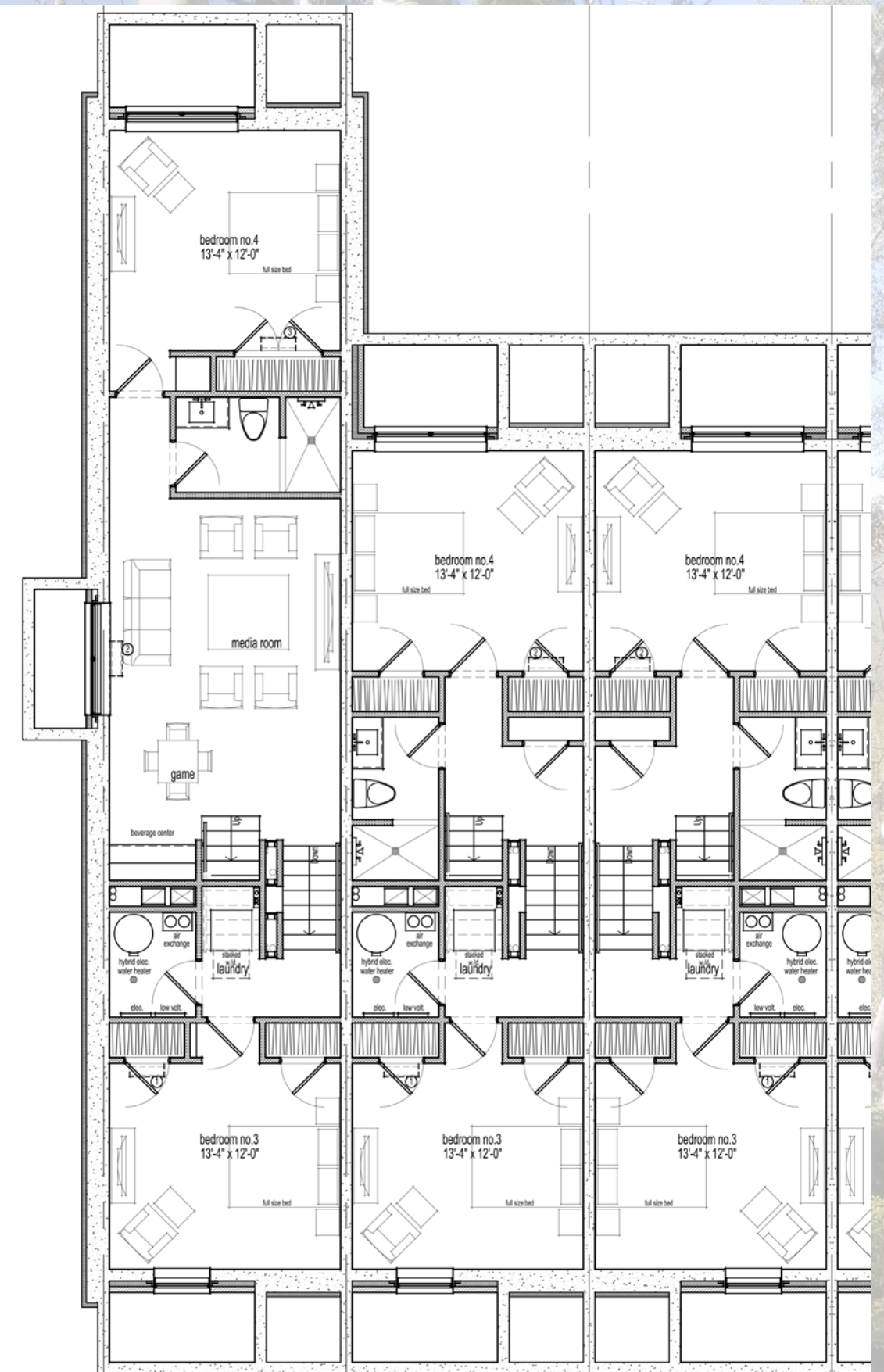
There will be a heating system under the basement floor. Providing a warm floor with large windows the rooms on this level will feel quite comfortable.



the Homer basement level

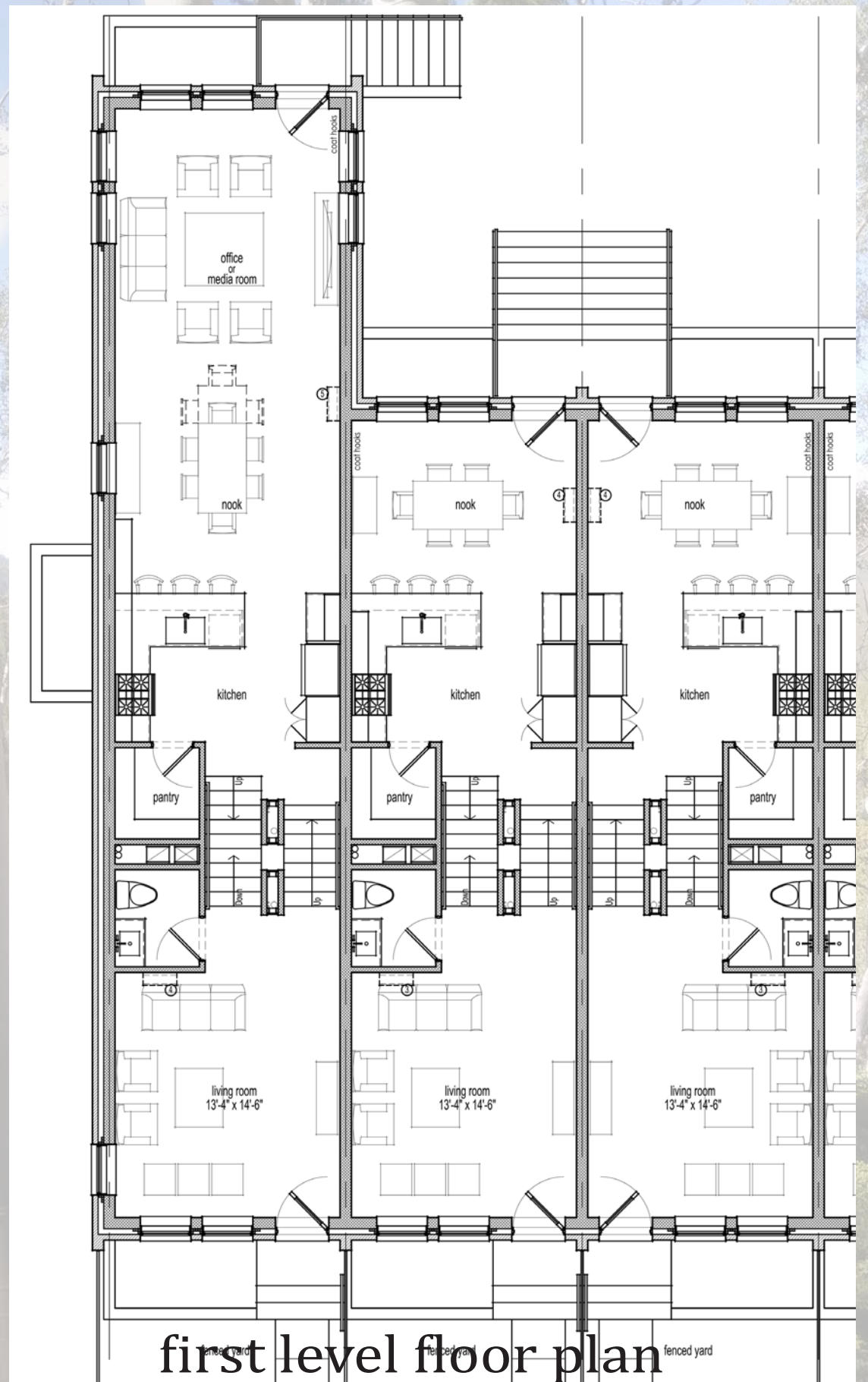


view from holly street



basement level floor plan

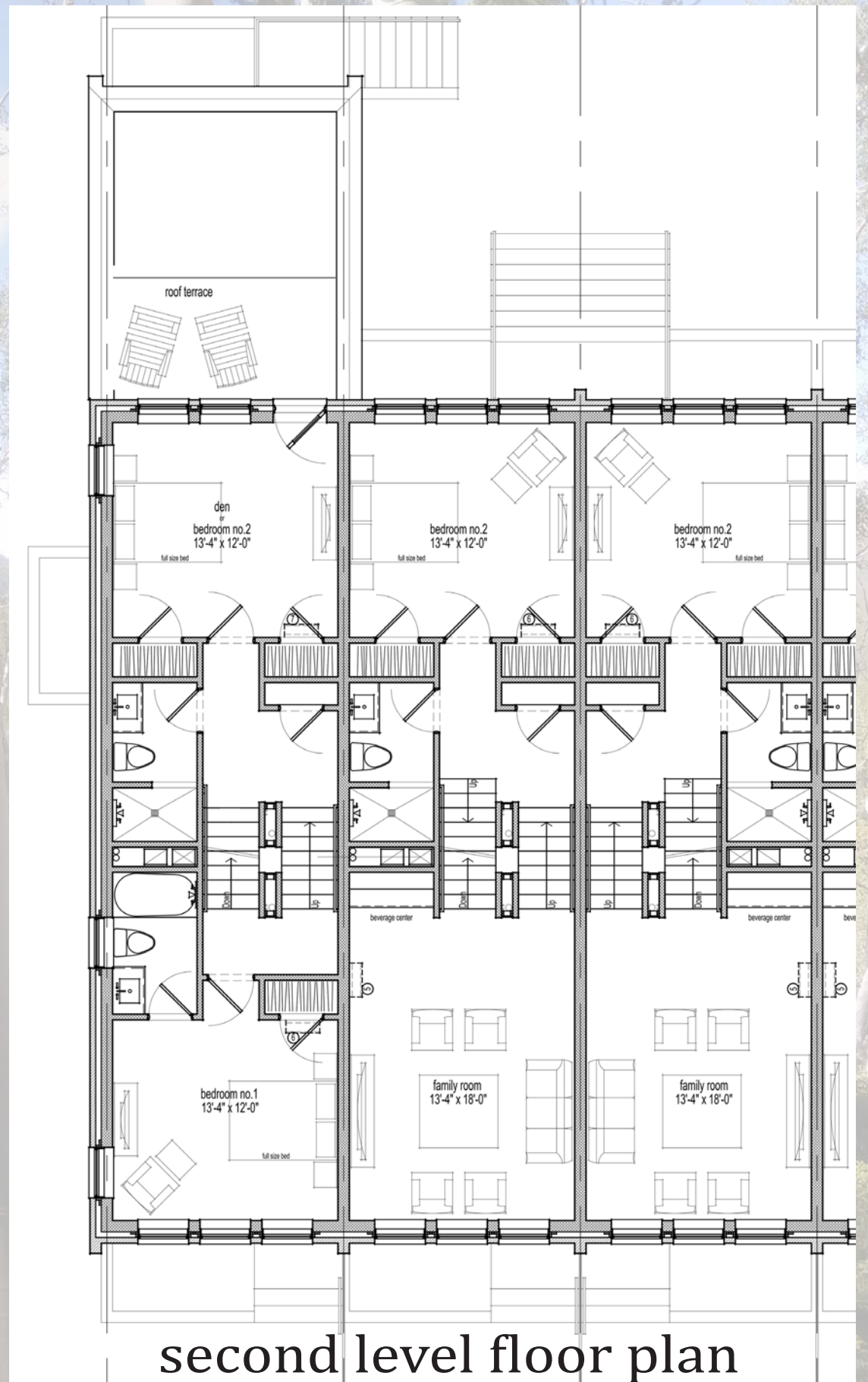
- Walls are exposed masonry.
- Floors are exposed concrete.
- Ceilings are exposed metal deck and trusses.



the Homer first level



- Interior doors and trim will be solid wood.



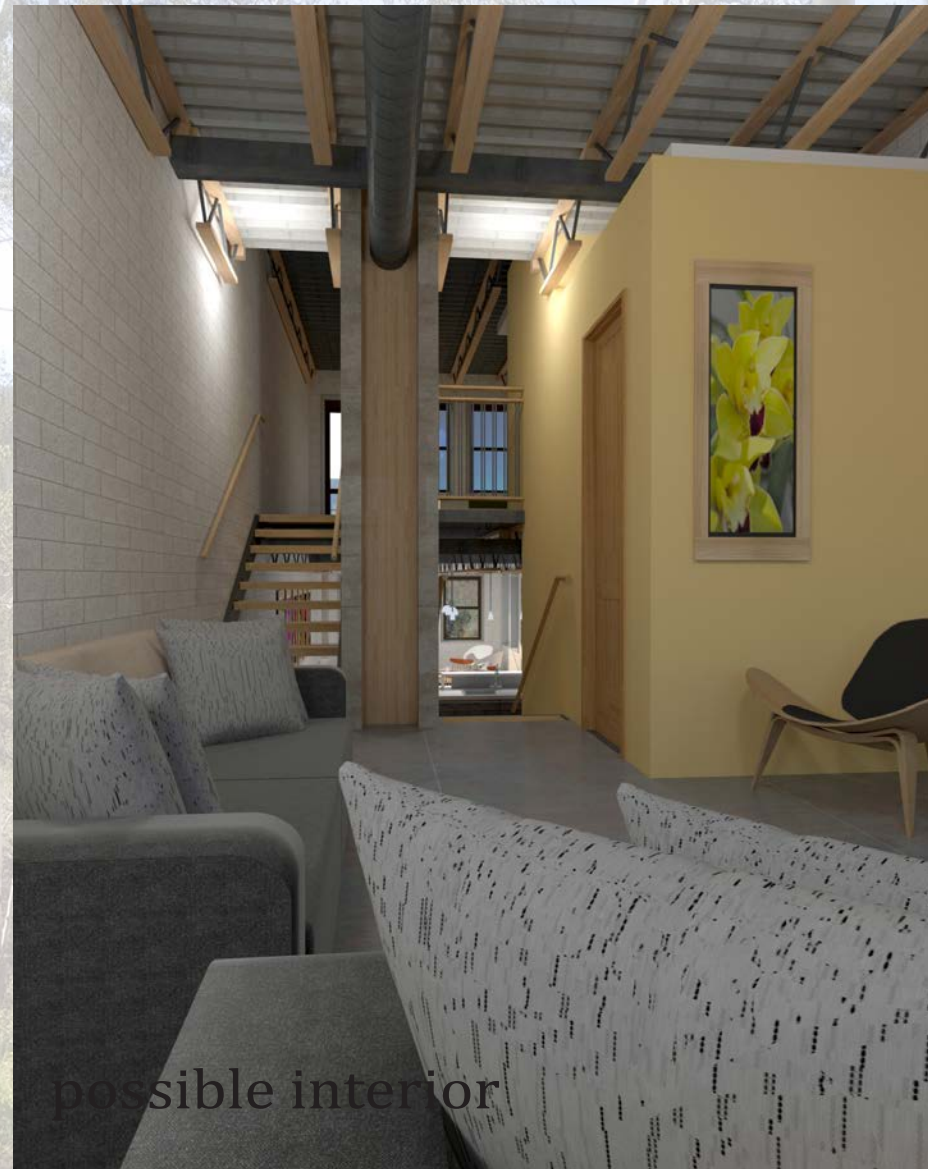
the Homer second level



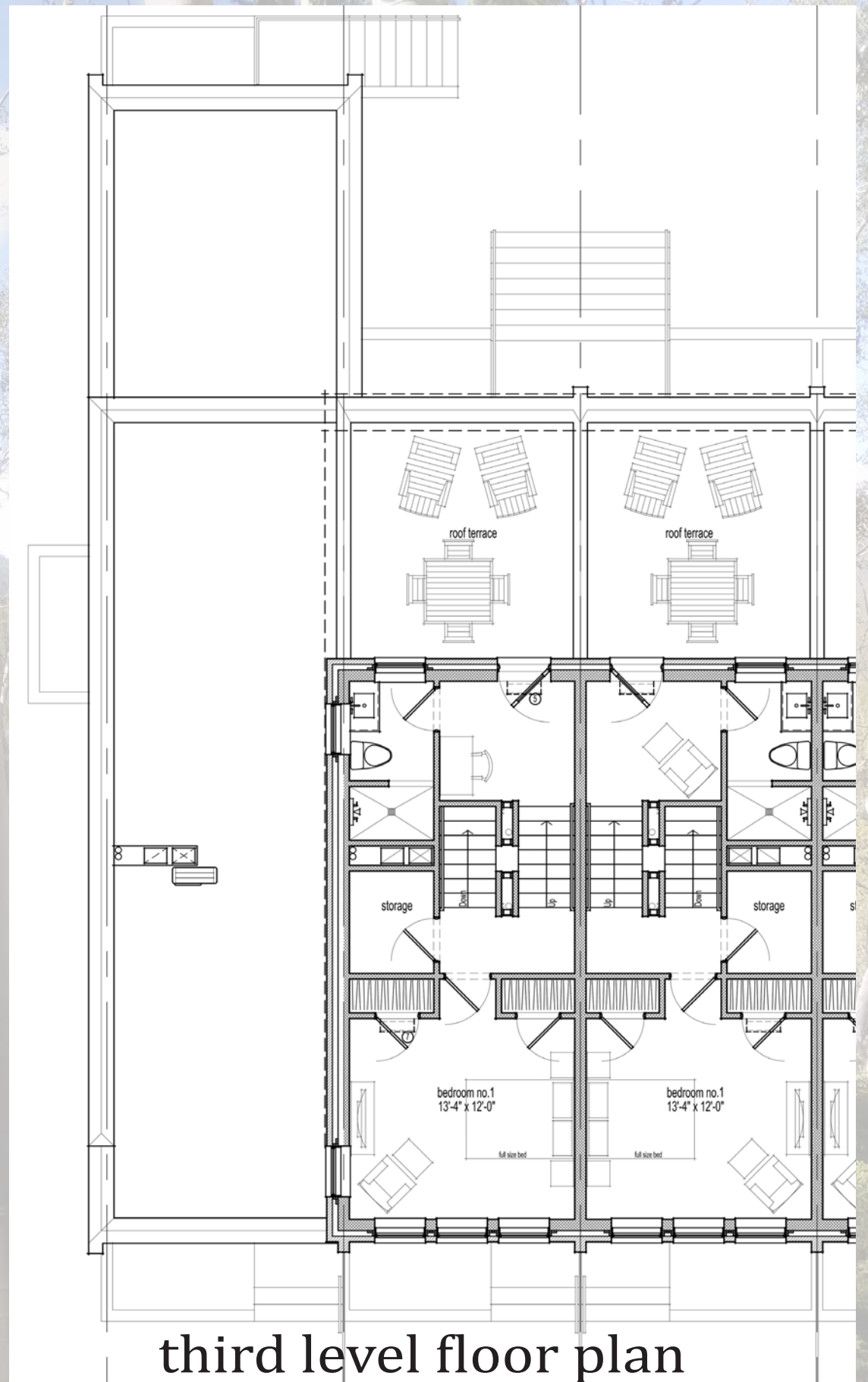
We have designed our units to be family friendly for the 21st century, using materials to create a healthy indoor environment (we will not be using any treat-ed wood or carpets with off-gasing dangerous chemicals).

Our fenced yards mean that you can let your dog sit outside and enjoy the sunshine in safety.

And the management company can take care of the lawn and need maintenance while you enjoy life.



the Homer third level



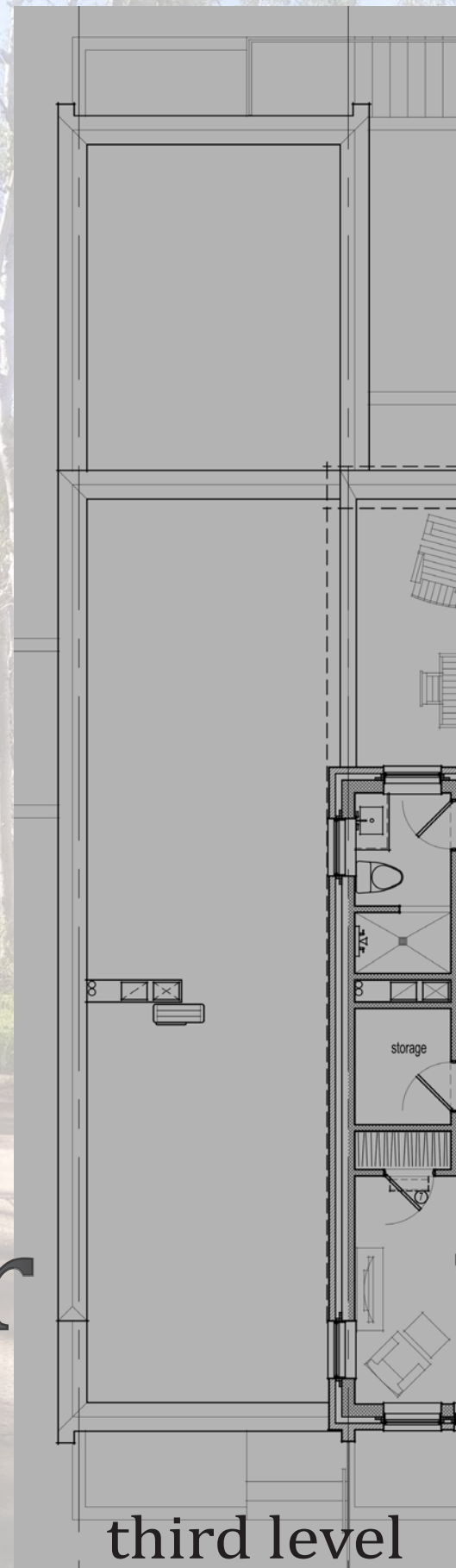
The units have fenced areas for dogs.

The basement and first levels are about 930 square feet each.

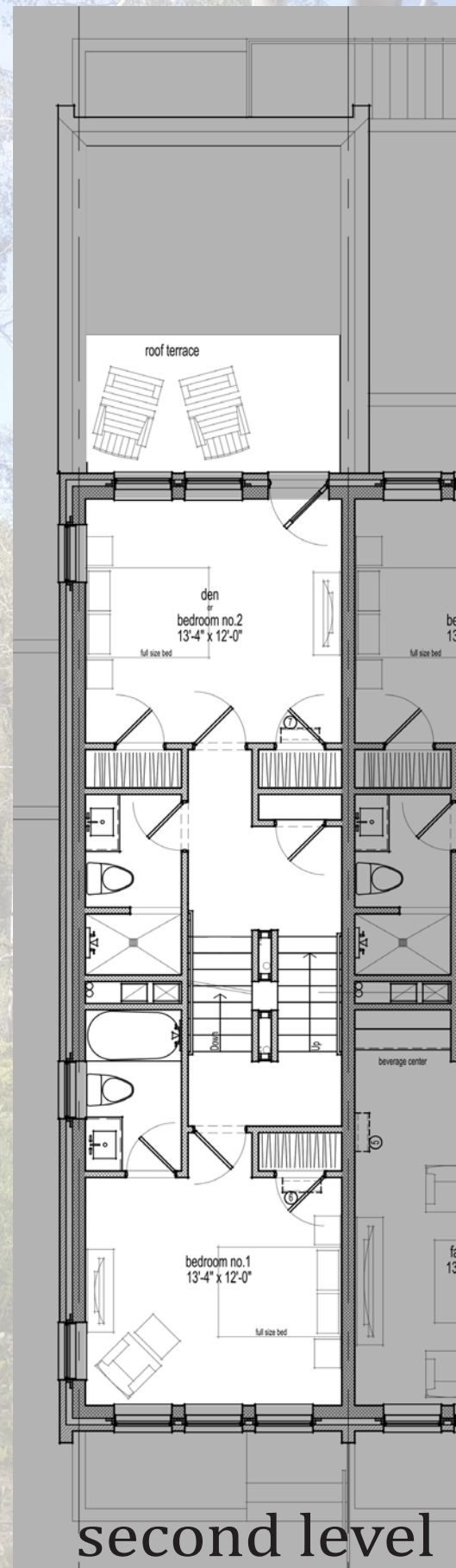
The second floor is about 700 square feet.

Total sq. ft. is about 2570+.

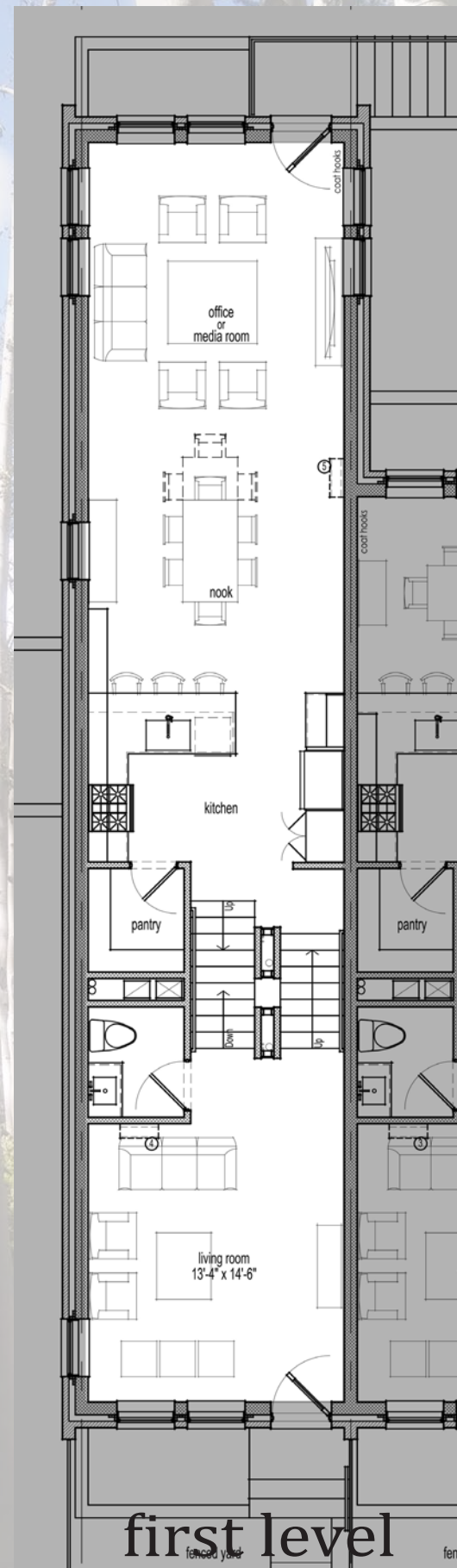
the Homer end units



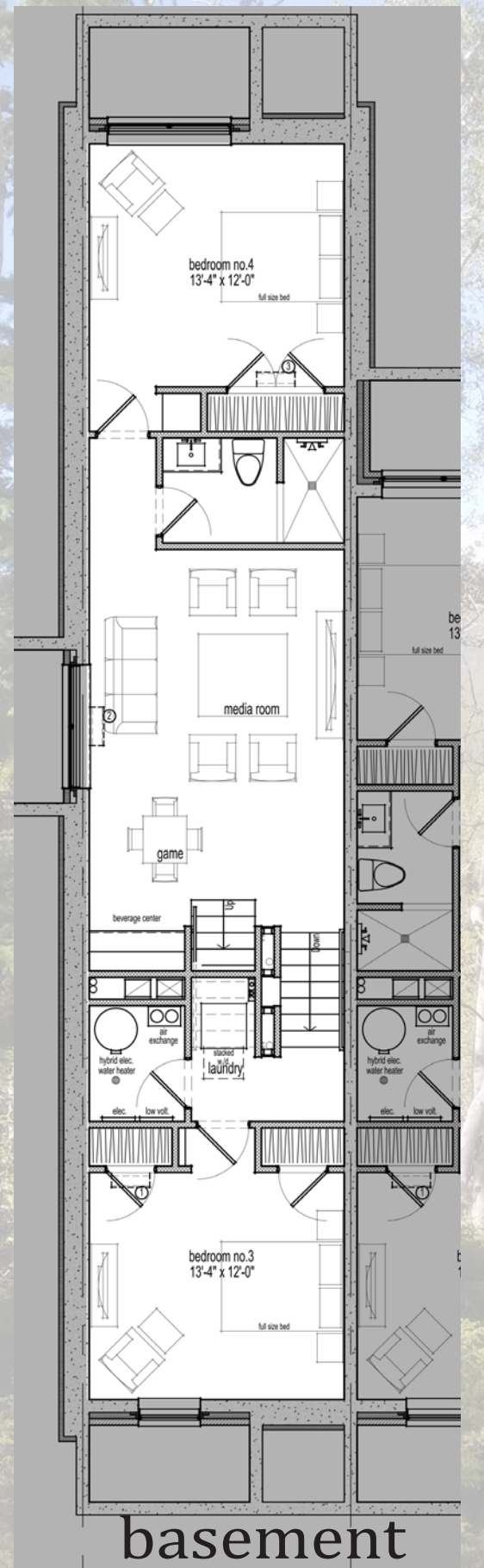
third level



second level



first level



basement

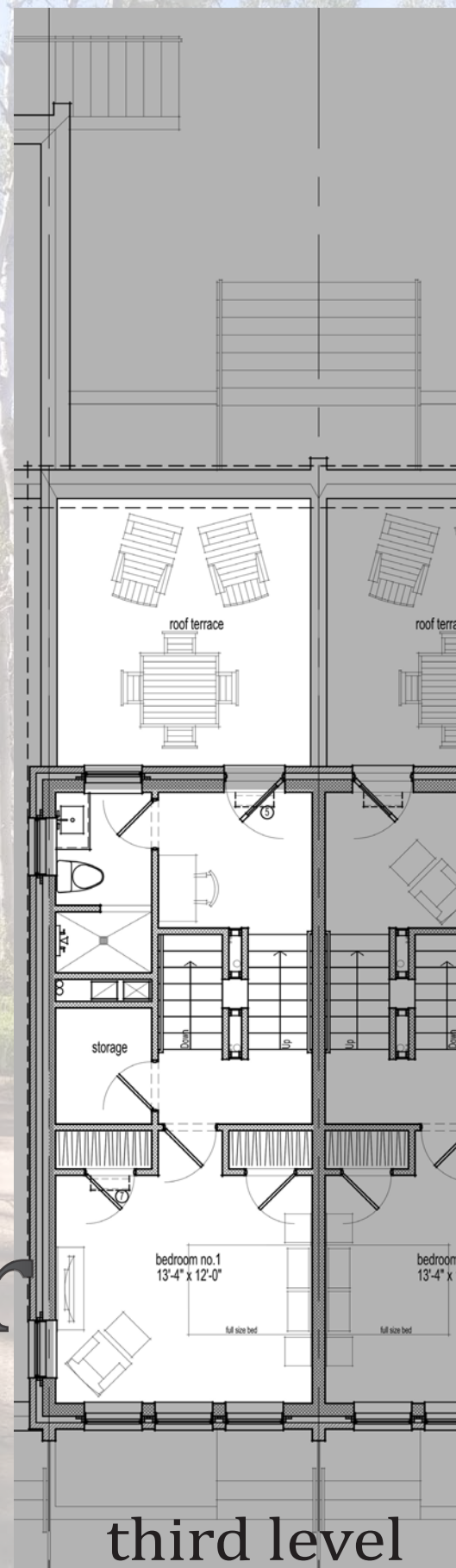
Interior units are perfect for a family without having to spend \$2M+ to buy a new single family house in this area.

The basement, first and second floor are about 700 square feet each.

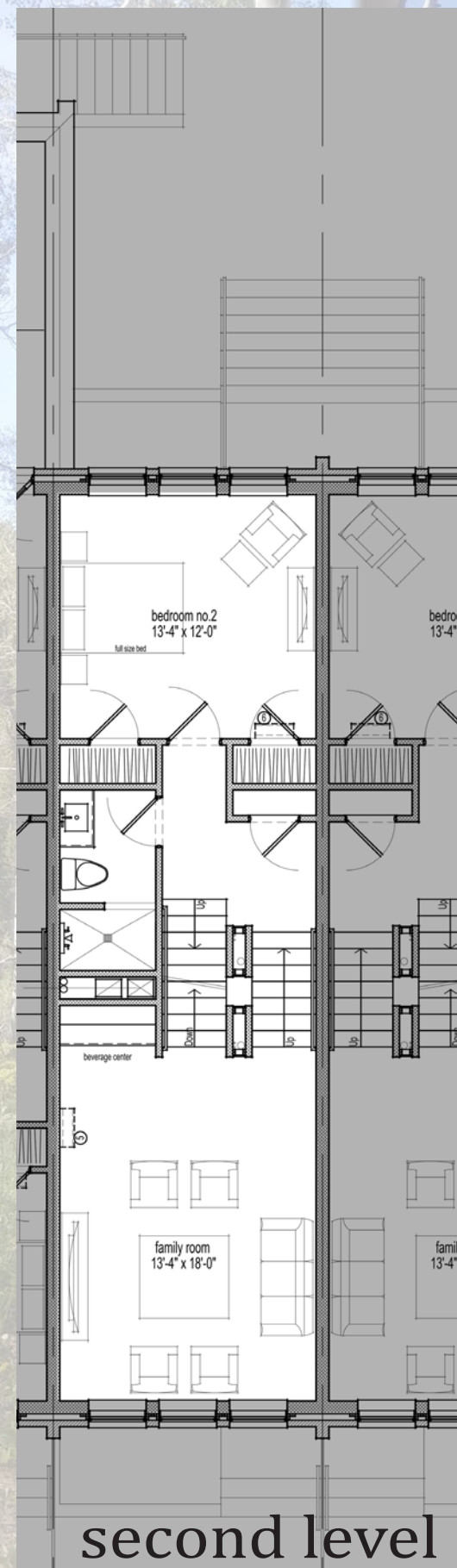
The third floor is about 510 square feet.

The total sq. ft. is about 2610+.

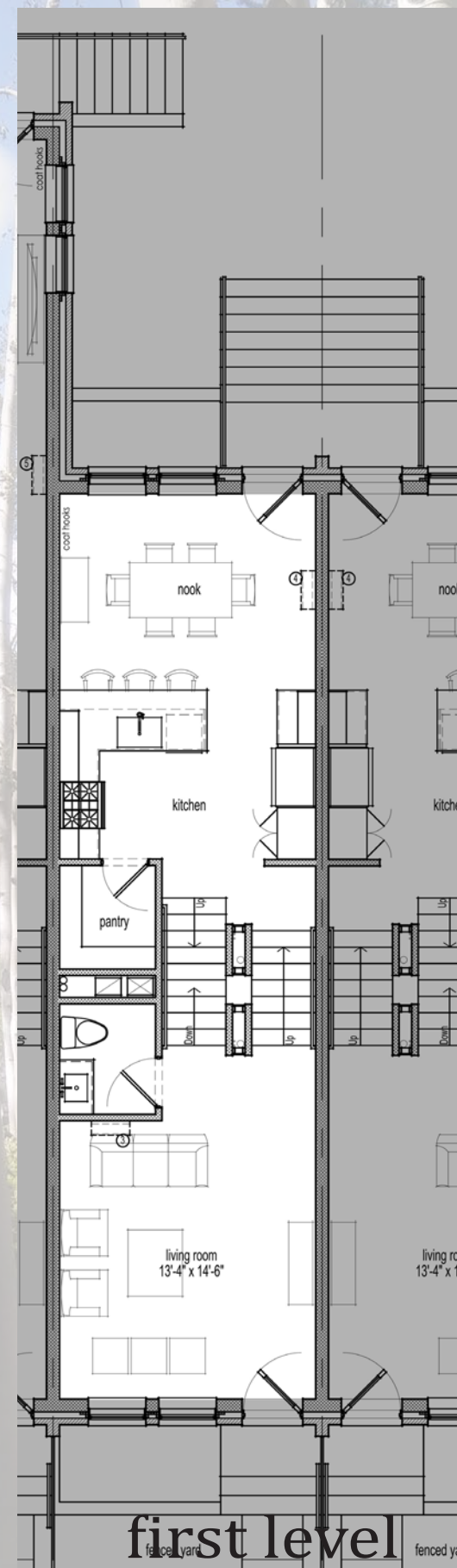
the Homer interior units



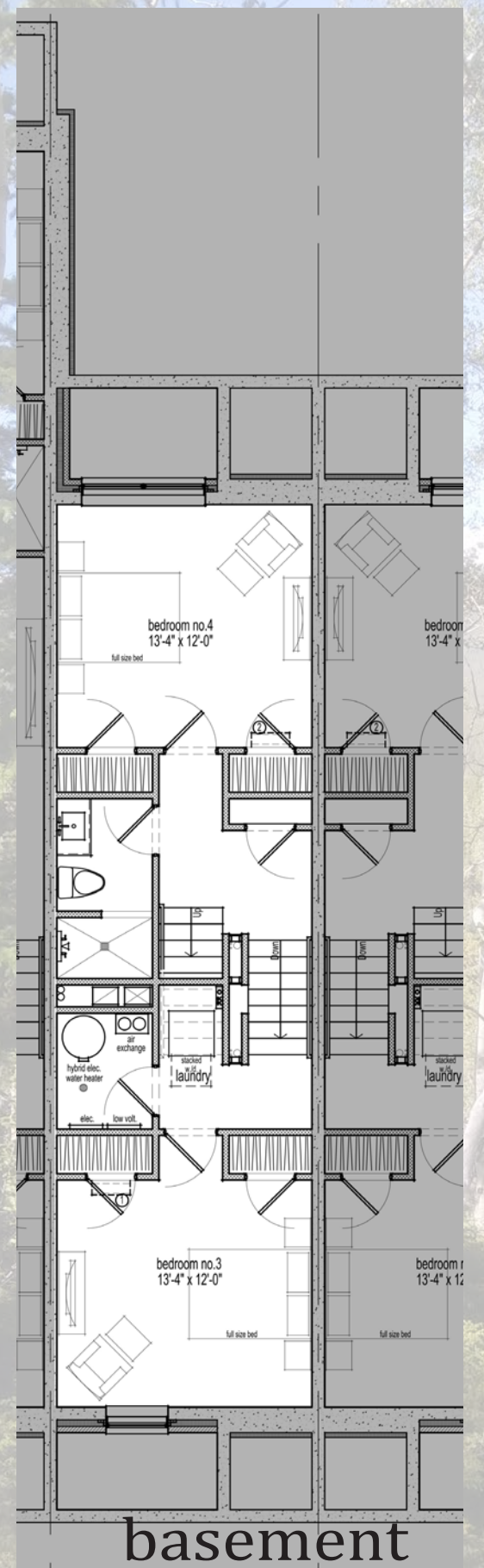
third level



second level



first level



basement

The townhouses will be a great house alternative. Highly rated DPS Carson Elementary is a few blocks away.

DPS Hill Middle School and DPS George Washington High School are nearby. Both have highly regarded honors programs.

Each unit comes with two parking spaces (except an end unit which has already been sold).

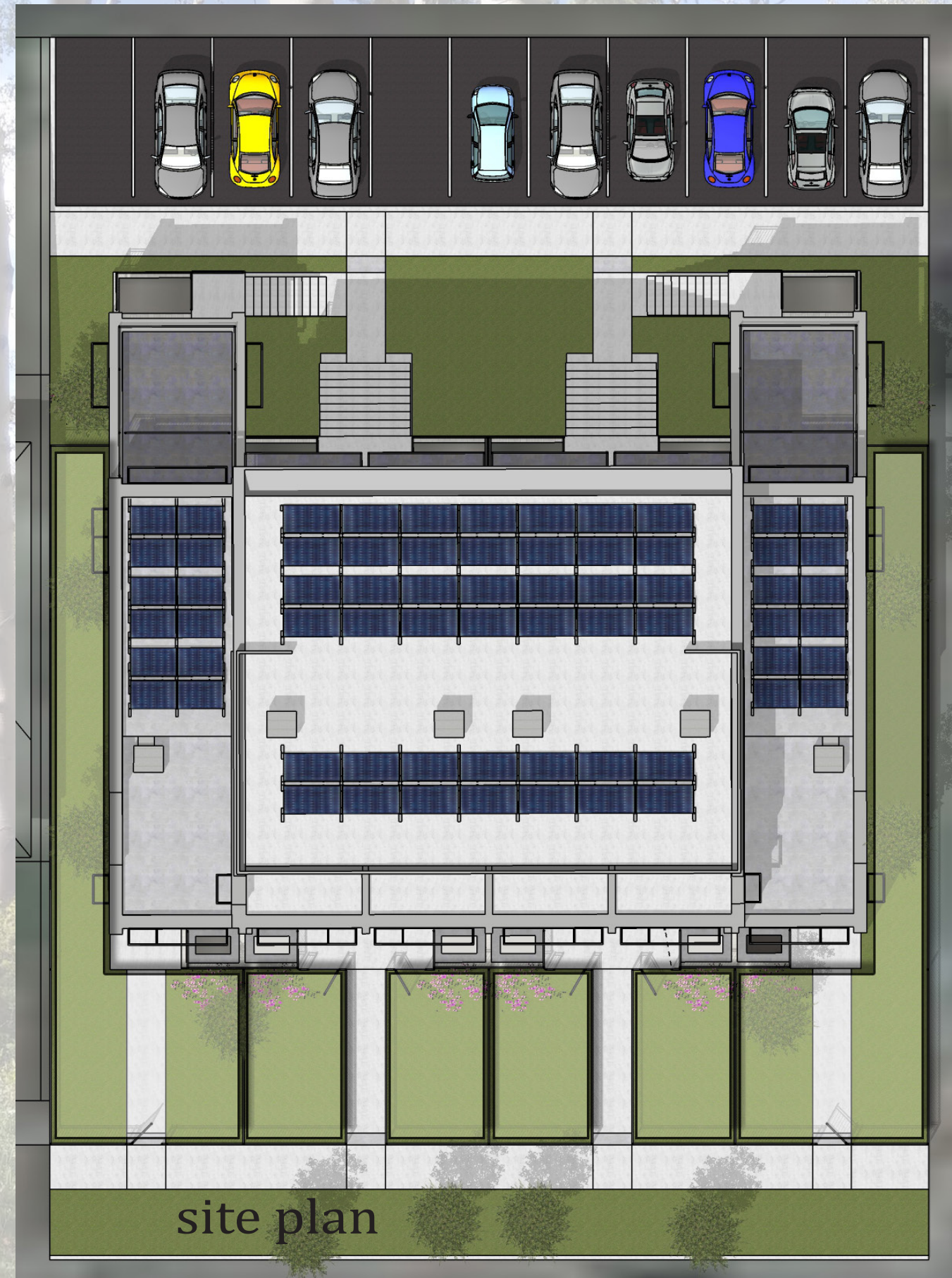
These will sell quickly. Please call Jason Lewiston at 303 802 6700.



view from holly street



view from above holly street



site plan

the Homer site plan



DO NOT DUPLICATE DRAWINGS
 without expressed written consent of the architect

per Unite States law these drawings are copyrighted
 registered under § 102(a)(5) and/or § 102(a)(8)

The images, plans, details, designs and
 intellectual property contained on these drawings
 and documents
 are copyrighted and are exclusive intellectual
 property of Jeff Dawkins Architect . LLC and of
 Jeff Dawkins, Architect

The design and the documents and drawings
 they represent remain the property
 of The Architect
 and are intended to be used for construction
 at the stated location only

the Homer on holly street



jeff dawkins architect . llc